



EASA CERTIFIED

UL CERTIFIED

Aircraft tailored for your flight experiences





About Bristell

Founded in 2009 by Milan Bristela and his son Martin. Bristell by BRM AERO is a premier aircraft manufacturer specializing in ultralight, light sport and general aviation aircraft. From its humble beginnings as a two-person team, Bristell has grown into a robust enterprise of professionals, dedicated to delivering superior quality aircraft.

Complete in-house control over its manufacturing processes, ensuring top-quality production.

■ Designed for All Pilots

Bristell aircraft suit all levels of experience, offering optimal performance, safety, and comfort for both training and extended flights.

■ Safety & Customization

Our aircraft feature top-tier safety enhancements and customizable options, tailored for a secure and individualized flying experience.

■ Innovation & Vision

Bristell is dedicated to pioneering high-quality sport aircraft that epitomize safety, performance, and comfort.



Martin & Milan Bristela



30+

Dealers
Worldwide

110+

Aircraft produced
annually

1 000+

Aircraft delivered
globally

24

Parts dispatched
within 24 hours



Aircraft Models

EASA CERTIFIED

MTOW 750 kg

Bristell B23-912iS
Bristell B23-915iS
Bristell B23-915 IFR

BRISTELL UL

MTOW 600 kg

Bristell Classic
Bristell Classic 916iS
Bristell RG
Bristell B8
Bristell Turboprop

ELECTRIC PROPULSION SYSTEM

MTOW 850 kg

Bristell B23 Energic



Seamless Luxury

Featuring premium leather and a meticulously crafted cockpit.



Advanced Garmin Avionics

Includes a full suite of top-tier navigation and communication systems.



Master Craftsmanship

All metal airplanes crafted by professionals: The priority is superior quality.



Widest Cabin in its Class

Offers a width of 130 cm providing more space than comparable models in class.



Efficient In Flight

Engineered for optimal performance and fuel consumption, thanks to the Rotax engine series.



Personal Approach

We fly with you before during and after the sale - unparalleled customer support.



Safety - Safety - Safety

The rigid metal cockpit and BRS ballistic parachute rescue system.



Customization Capabilities

Custom solutions tailored to individual preferences and needs. 90% is made internally.



Elegance in the Sky

Distinctive aircraft design, elegant contours, and optimal ergonomics. This is Bristell



EASA CERTIFIED

FAA CERTIFIED

Bristell B23

It offers more space than other aircraft in its class



The B23 has been designed to meet EASA and FAA certification requirements. At Bristell, we listened to feedback from satisfied customers around the world when creating our new aircraft.

Experience high performance with the perfect blend of the ROTAX 915iSc engine and the MT propeller. Enjoy fast, sporty flight with exceptional agility and precise control.

Whether you're planning cross-country trips or high-altitude adventures, the B23 is your ideal choice. Choose the Bristell B23-915 IFR for an **unlimited flying experience**.

Variations of the Bristell B23

- Bristell B23-912iS
- Bristell B23-915iS
- Bristell B23-915 IFR

- Constantspeed Propeller
- State-of-the-art Garmin Avionics
- Full FADEC



MTOW 750 kg
USEFUL LOAD 285 kg
CERTIFIED UP TO 5 486 m

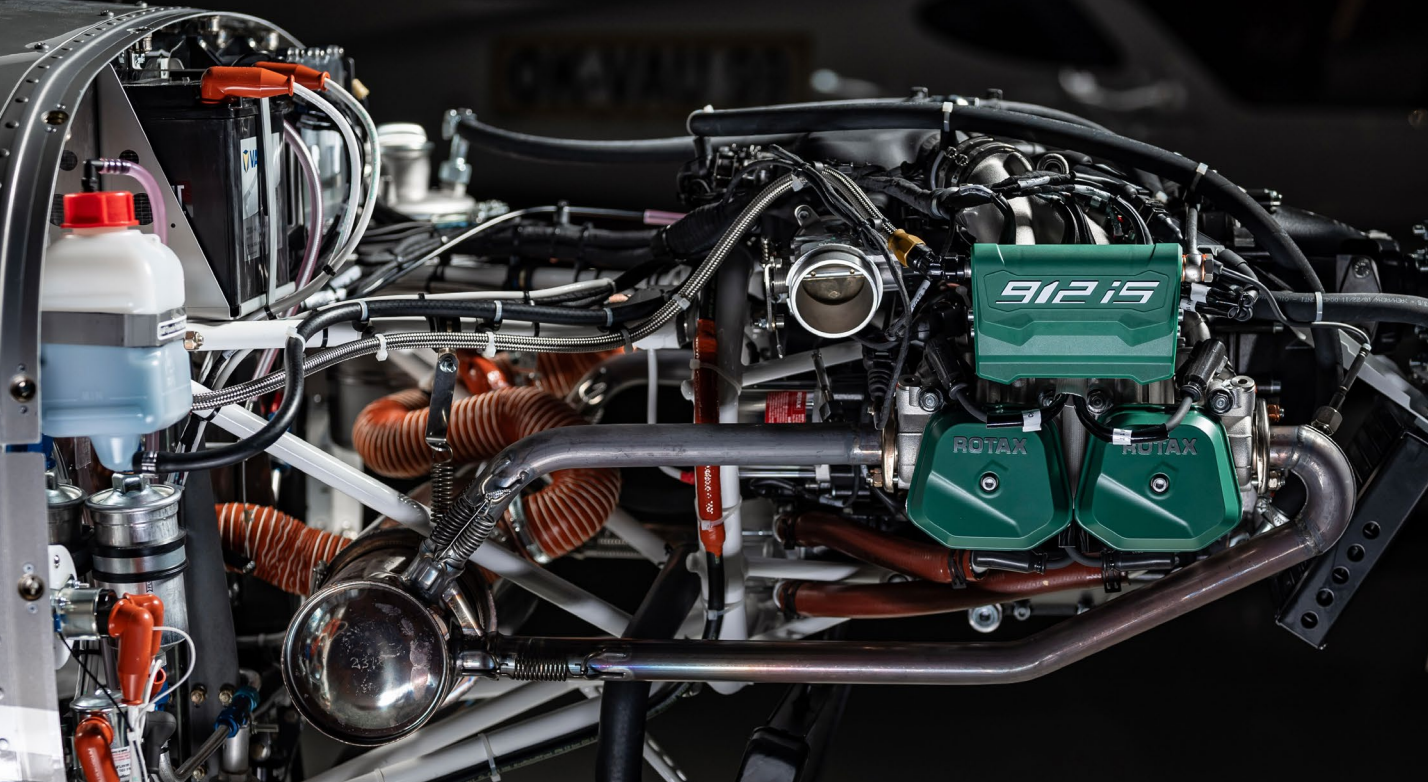




EASA CERTIFIED

Bristell B23-912iS

The new standard in efficiency and performance



The new Bristell B23-912iS combines cutting-edge innovation with a focus on low operational costs and efficiency, making it an ideal solution for both private pilots and flight schools. Powered by the advanced Rotax 912iSc Sport, this aircraft offers outstanding fuel savings and environmentally friendly performance without compromising on safety or comfort.

Thanks to the single lever power control combined with FADEC engine management, the system automatically sets the optimal propeller angle to maximize efficiency. This integration ensures that the engine operates within the optimal RPM range, delivering highly effective performance and improved fuel consumption. **Top choice for flying schools: fuel-efficient aircraft!**



	ROTAX 912iSc
Power	100 hp
TBO	2 000 hours
Max horizontal flight speed VH	120 KTAS
Range at 75 %	700 NM
Max. operating altitude	14 000 ft
Max. takeoff weight	750kg
Useful load	300 kg
Certified	Day/Night VFR





EASA CERTIFIED

Bristell B23-915 IFR

The Go-To affordable choice for IFR training



The Bristell B23-915 IFR is engineered as a premier solution for Instrument Flight Rules (IFR) training, blending advanced avionics, robust performance, and compliance with rigorous international standards. This aircraft not only meets the European CS-23 requirements but also provides a cost-efficient platform for comprehensive flight training.

Equipped with a modern dual glass cockpit, the Bristell B23-915 IFR incorporates Garmin G500TXi and G3 X Touch displays. These systems utilize synthetic vision technology (SVT) to provide three-dimensional views of terrain, obstacles, and air traffic, significantly enhancing situational awareness and safety. This sophisticated cockpit setup is ideal for IFR certification training, enabling students to develop their skills using the same advanced tools found in today's aviation industry.



Engine	ROTAX 915 iSc
Power	141 hp turbocharged, constant power up to FL150
TBO	1200; future: 2 000 hours
Max. horizontal speed in 10 000 ft	150 KTAS
Rate of climb at MCP	1500 fpm
Range at 75 %	700 NM
Max. operating altitude	18 000 ft
Max. takeoff weight (MTOW)	750 kg
Useful load	272 kg





UL CERTIFIED

Bristell Classic

Low maintenance, spacious luggage—our bestseller



The ultra-light Bristell Classic, featuring a three-wheel fixed undercarriage, is an excellent choice for flight school training, glider towing, and recreational flying. With its ergonomic design and the largest cockpit in its class, it's perfectly suited for longer cross-country flights.

The Bristell Classic versions boast heavy-duty wing spars that enhance safety in extreme weather conditions. Easy to pilot and taxi, with low maintenance costs and a spacious luggage compartment, this model is our bestseller—further enhanced by the range of Rotax engine variations available to tailor performance to your needs.

Variations of the Bristell Classic

- Bristell 912 ULS
- Bristell 912iS
- Bristell 915iS
- Bristell 916iS

Certified with ROTAX 915iS/916iS in Germany as ultralight.

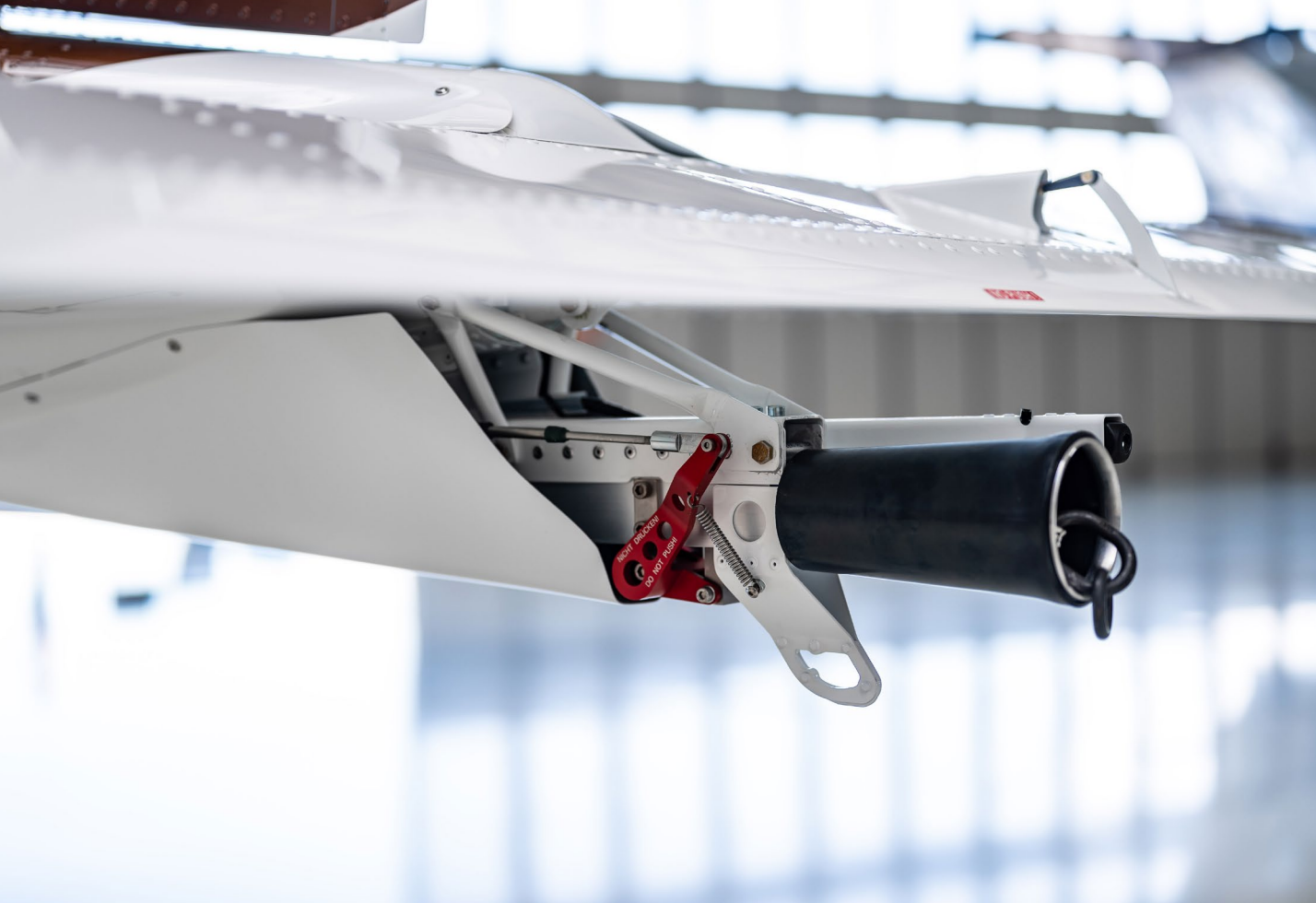
	ROTAX 912/912iS	ROTAX 915iS/916iS
Empty weight	340 kg	360 kg
Max. takeoff weight (MTOW)	600 kg	600 kg
Fuel tanks capacity	120/164 l	120/164 l
Wing luggage compartment	2x 20 kg	2x 20 kg
Maneuvering speed VA	97 KCAS	97 KCAS
Max. flap speed VFE	75 KCAS	75 KCAS
Max. horizontal flight speed VH	123 KTAS	141 KTAS
Never exceeded speed VNE	156 KCAS	156 KCAS



UL CERTIFIED

Bristell Classic 916iS

Perfect choice for glider towing at your club



The ultimate evolution of our bestseller combines proven design excellence with cutting-edge power. Perfect for flight schools, glider towing, and recreational flying, the Bristell Classic 916iS delivers outstanding performance and unmatched versatility in its class.

With the powerful ROTAX 916iS engine, exceptional handling characteristics, and the most spacious cockpit in its category, this aircraft excels in crosscountry flights and challenging weather conditions. The heavy-duty wing spars, advanced avionics, and superior ergonomics make every flight a safe and enjoyable experience, whether you're training, towing, or exploring new horizons.

Certified with ROTAX 915iS/ 916iS in Germany as ultralight.

Engine	ROTAX 916iS
Power	160 hp
TBO	2 000 hours
Max. horizontal speed in 10 000 ft	147 KTAS
Rate of climb at MCP	1500 fpm
Range at 75 %	750 NM
Fuel consumption on 75%	26 lph
Max. operating altitude	18 000 ft
Max. takeoff weight	600 kg
Useful load	Up to 230 kg
Maximum take off weight of glider	850 kg





UL CERTIFIED

Bristell RG

With retractable gear, it's the best for cross-country flights.



The Bristell RG version has a retractable undercarriage which makes it an ideal airplane for more advanced training and economical cross-country flights. Thanks to the combination of good ergonomic design and the largest cockpit in its category, this airplane is also an ideal option for long cross-country flights. In standard configuration, the BRISTELL RG is equipped with heavy-duty wing spars, making cross-country flights much safer in extreme weather conditions.

	ROTAX 912/912iS	ROTAX 915iS
Empty weight	345 kg	375 kg
Max. takeoff weight (MTOW)	600 kg	600 kg
Fuel tanks capacity	120/164 l	164 l
Wing luggage compartment	2x 20 kg	2x 20 kg
Max. horizontal flight speed VH	131 KTAS	147 KTAS
Max. operating altitude	18 000 ft	18 000 ft
Useful load	255 kg	225 kg





Bristell B8

All-metal high-wing



Bristell B8 is an all-metal high-wing without struts and with a steerable nose wheel. The cockpit is 125cm wide. The doors of the cockpit as well as the luggage compartment door are made from composite material.

The basic model is powered by a Rotax 912 ULS (100 HP). Another engine option for the Bristell B8 aircraft is the Rotax 915 iS engine.

	ROTAX 915iS
Wing span	9,13 m
Cockpit width	1,25 m
Max. takeoff weight (MTOW)	600 kg
Fuel tanks capacity	150 l
Maneuvering speed VA	97 KCAS
Max. flap speed VFE	75 KCAS
Max. horizontal flight speed VH	138 KTAS
Never exceeded speed VNE	156 KCAS





Bristell Turboprop

The most efficient turboprop on the market

The Bristell Turboprop, powered by the Turbotech turbine from France, is the perfect solution for powering light airplanes. Turbotech specializes in lightweight turbines with highly efficient fuel consumption. Thanks to its special heat exchanger, the turbine's fuel consumption is comparable to that of the most powerful four-cylinder combustion engines.

The main advantages of the Turbotech system include a full FADEC system, a torque limiter, and fully automatic START and STOP functions. The turbine's power output ranges from 140 to 160 HP, depending on the configuration. Bristell is one of the first companies to install the Turbotech turbine, which has logged the most flight hours. Flying a turbine has never been easier than with Turbotech.
The TBO is 3,000 hours!



Empty weight	350 kg
Max. takeoff weight (MTOW)	600 kg
Fuel tanks capacity	120/164 l
Fuselage luggage compartment	15 kg
Wing luggage compartment	2x 20 kg
Power	130 HP
Fuel consumption on 75%	25 l/h
Fuel	Jet A1, Diesel
TBO	3 000 hours
Maneuvering speed VA	97 KCAS
Max. flap speed VFE	75 KCAS
Max. horizontal flight speed VH	127 KTAS
Never exceeded speed VNE	156 KCAS



ELECTRIC PROPULSION SYSTEM

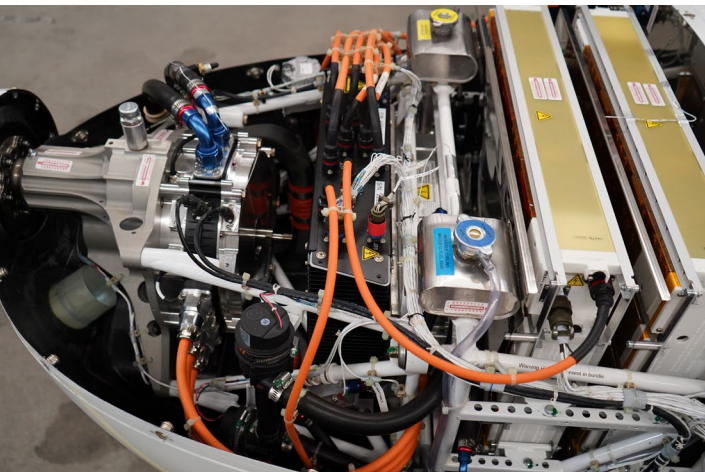
Bristell B23 Energetic

Powered by H55 electric propulsion system

The Legacy of Solar Impulse:

H55 Comes to Bristell H55, born from the Solar Impulse project, the first electric airplane to have circumvented to globe powered only by the sun, is transforming the aviation industry through its certified electric propulsion systems (EPS).

H55's patented technology and years of expertise delivers quieter and more efficient air transport solutions. With its modular and scalable technology which has proven itself in real flight conditions, H55's solutions are suitable for a wide range of CS23 / FAR23 applications.

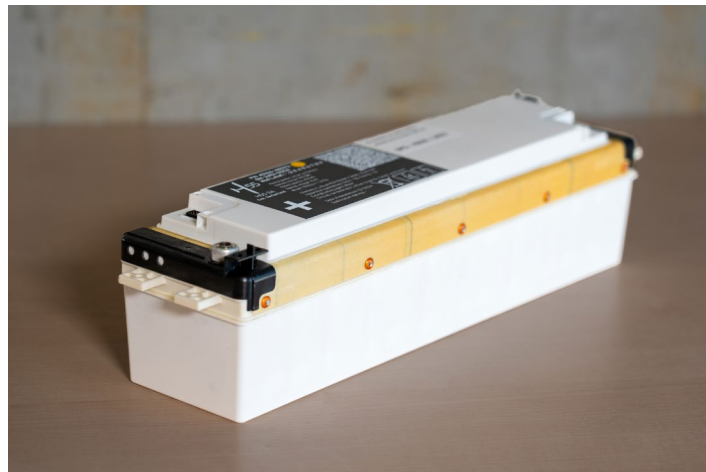


Leading the way to a new era in aviation

Bristell's expertise in aircraft manufacturing, combined with H55's leadership in electric flight, sets new standards in general aviation. The Bristell B23 Energic is not just an aircraft; it is a commitment to efficiency and performance, providing a uniquely quieter flying experience.

Introducing the B23 Energic

Designed and produced by H55, the industry leader in electric propulsion, the Bristell B23 Energic showcases cutting-edge technology and state-of-the-art engineering. This aircraft delivers a quieter,



cleaner, and cost-effective flying experience without compromising performance.

As the first electric trainer, the Bristell B23 Energic is tailored for flight schools and private pilots, combining advanced technology with reliability. Equipped with H55's electric propulsion system and next-generation batteries, it is manufactured in a high-tech, regulatory-approved facility, ensuring superior quality and efficiency. Built for operational experience, the Bristell B23 Energic sets a new benchmark in pilot training and personal aviation.

Endurance	60 minutes of flight time
Climb Rate	800 feet/min at Maximum Takeoff
Max Cruise Speed	126 mps (110 Kts)
Stall Speed	47 Kts
Payload	400 lbs

- **Flight Display:** Dual Garmin G5, featuring attitude, airspeed, altitude, side slip, and magnetic heading, complete with a backup battery
- **Radio:** Garmin GTR205
- **Transponder:** Garmin
- **Flight Controls:** Stick-based controls
- **Indicators:** Display for RPM, clock, voltage/current; angle of attack indicator (Garmin GI260)

Aircraft deliveries will commence in 2026 in Europe, and in 2027 in the USA and Canada, with plans for further expansion. For inquiries and pre-orders, reach out to our sales team and secure your place in aviation history with the B23 Energic.



Interior and upholstery for maximum comfort

Sit comfortably. Fly. Enjoy. Thanks to the comfort of our seats, spacious cockpit and great ergonomics you can cover any distance. Precise processing. Choose a color combination according to your personality.





Bristell design

The aircraft is designed by dedicated professionals who combine passion and precision in every detail. In essence, we craft an airplane that truly complements your lifestyle.



OPTIMIZE YOUR BRISTELL FLIGHT EXPERIENCE WITH FLYSTO

With FlySto, we offer you an innovative solution to analyze your flight data in detail, making your flying experience even safer and more efficient.



www.flysto.net



Flight Data Analysis

FlySto processes and visualizes your avionics logs instantly, providing precise insights after each flight.

Performance Review

Compare and verify your takeoff, cruise and landing performance with the POH and the Bristell fleet on FlySto.

User Friendly

FlySto is easy to use and works with many avionics systems, including the advanced avionics in your Bristell aircraft.

Safety Features

Quickly check if your flight and engine parameters are within recommended ranges with FlySto's customizable flag rules feature.

EFFORTLESS FLIGHT DATA ANALYSIS FROM YOUR BRISTELL AIRCRAFT WITH FLYSTO!

- 📁 **Log:** Insert an SD card in your avionics to capture flight data.
- 📁 **Upload:** Create a free FlySto account and upload your flight logs from the SD card.
- 🔍 **Analyze:** Instantly visualize and gain insights from your flights.
- 🔧 **Review:** Explore your flights in 2D, 3D, cockpit view, graphs, video sync, and a lot more!







Find your dealer:
Visit [BRISTELL.COM](https://www.bristell.com)
+420 608 306 338
[INFO@BRISTELL.COM](mailto:info@bristell.com)

